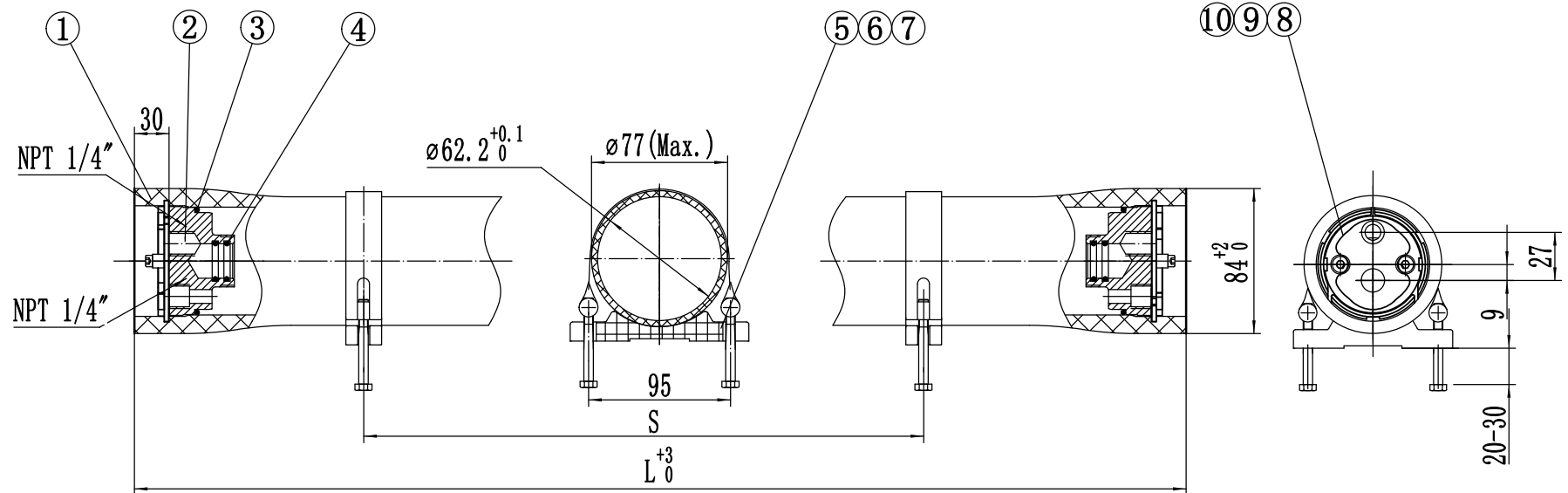


1000PSI



Note

- 1. Design pressure: 1000PSI (69Bar)
- 2. Design temperature: 150° F (66° C)
- 3. Minimum temperature: 14° F (-10° C)
- 4. Working medium: Water, PH 3-11
- 5. Please operate in accordance with User Guide
- 6. Flexible piping should be used on permeate connection to manifold
- 7. Subject to change without prior notice

Ref.	Part Number	L (MM)	S (MM)	Approx assembly weight (KG)
2540	F25100E-1	1106	700	5.3
2521	F25100E-2	623	400	3.8
2514	F25100E-3	445	200	3

10	Securing Ring	20001064	2	2507 SST	
9	Locking Segment Screw	20000205	4	304SST	M6*10
8	Locking Kit Segment	20001061-1063	2 Set	2507 SST	
7	Strap	20000195	2	304SST-Rubber	
6	Strap Screw	20000206	4	304SST	M6*60
5	Saddle	20000004	2	Rubber	
4	O-Ring	20000320	4	EPDM	19*2.65
3	O-Ring	20000327	2	EPDM	56*3.55
2	End Plate	20000041	2	2507SST	
1	Pressure Shell	See Selection Table	1	Epoxy FRP	White
Ref.	Description	Part Number	Qty.	Material	Remark

Harbin FirstLine Environment Technology Co., Ltd.

<b>First Line</b>	Design	Model	
	Date	F25-1000E Pressure Vessel	
	Review		
	Date		
	Review	DRG	
Date	F25-100-E-00-01		
Review			
Date			
Approval	Unit	REV.	
Date	mm	2023	